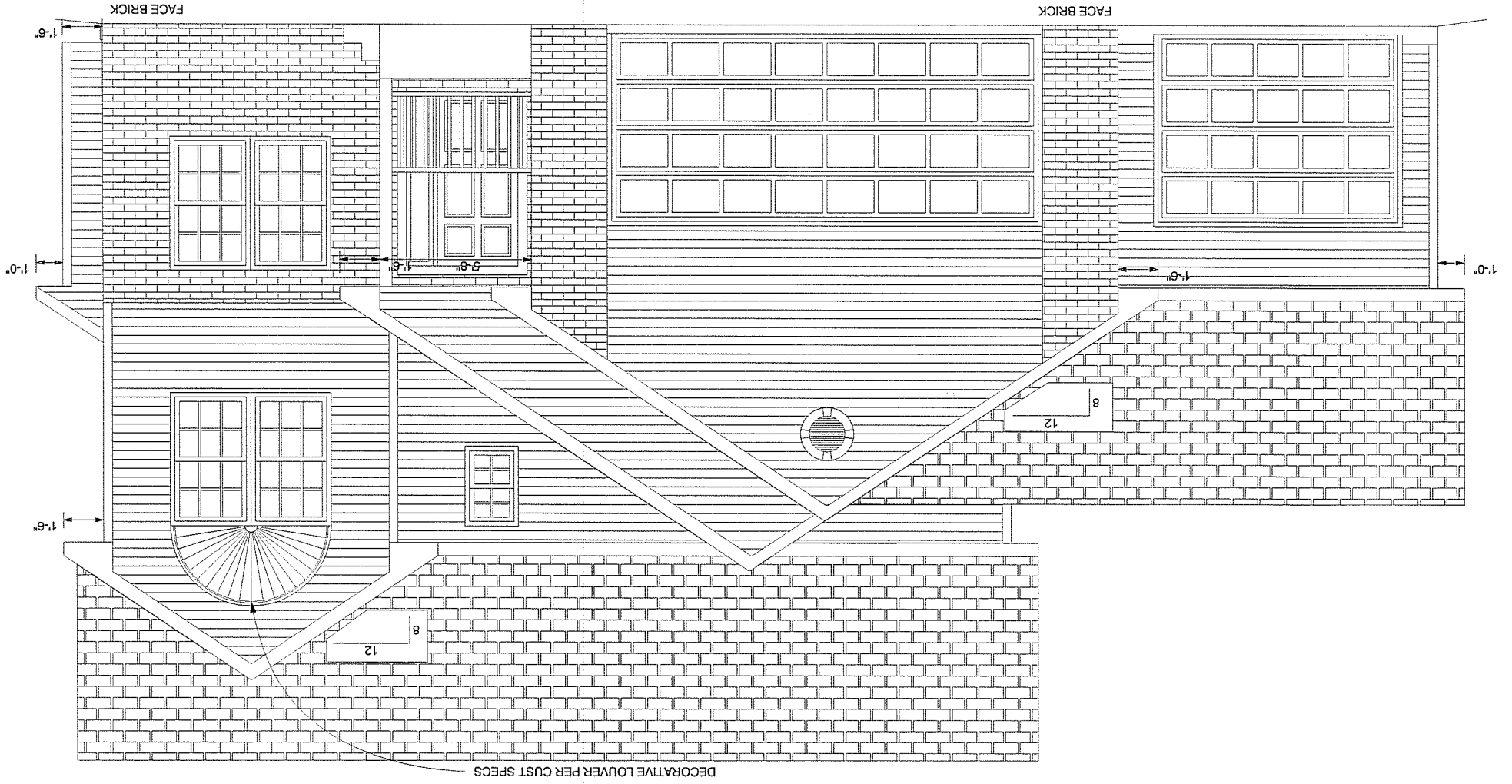


BR12R

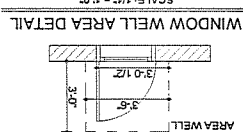
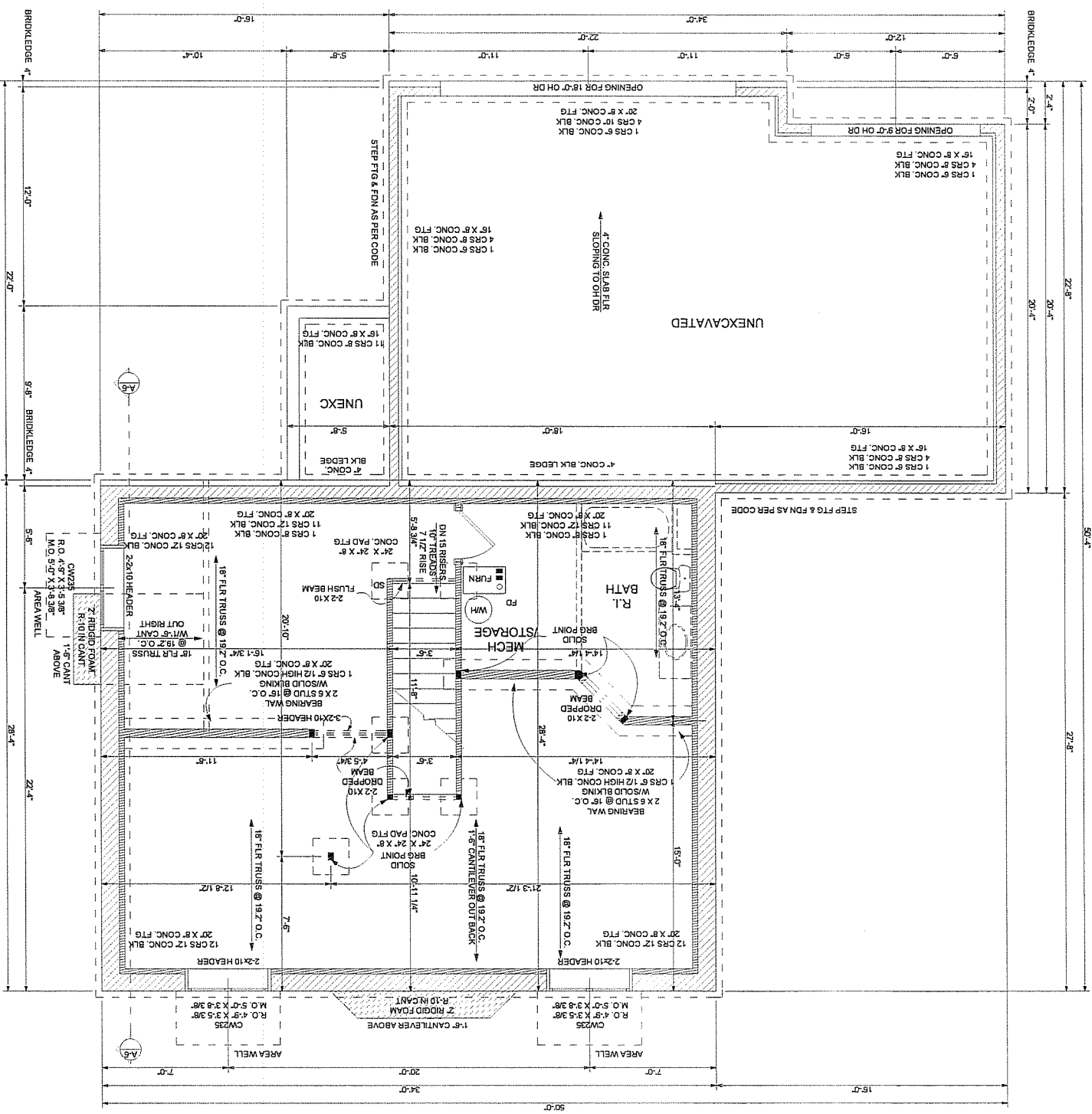
SCALE : 1/4" = 1'-0"

# FRONT ELEVATION



# BASEMENT FLOOR PLAN

SCALE: 1/4" = 1'-0"



WINDOW WELL AREA DETAIL

THESE ARE STATE CODE MIN. DIMENSIONS FOR BSMT. EGRESS WDW WELLS ALSO ANY WDW. WELL W/A VERTICAL DEPTH OF MORE THAN 44\"/>

APPROVED LADDER OR STAIRS

SCALE: 1/4" = 1'-0"

AREA WELL

W/A U-VALUE OF .27

W/A U-VALUE OF .34

W/A U-VALUE OF .34

W/A U-VALUE OF .34

W/A U-VALUE OF .34

W/A U-VALUE OF .34

W/A U-VALUE OF .34

W/A U-VALUE OF .34

W/A U-VALUE OF .34

W/A U-VALUE OF .34

W/A U-VALUE OF .34

W/A U-VALUE OF .34

W/A U-VALUE OF .34

W/A U-VALUE OF .34

W/A U-VALUE OF .34

W/A U-VALUE OF .34

W/A U-VALUE OF .34

W/A U-VALUE OF .34

W/A U-VALUE OF .34

W/A U-VALUE OF .34

W/A U-VALUE OF .34

W/A U-VALUE OF .34

W/A U-VALUE OF .34

W/A U-VALUE OF .34

W/A U-VALUE OF .34

W/A U-VALUE OF .34

W/A U-VALUE OF .34

## NOTE:

ALL SMOKE DETECTORS ARE TO BE INTERCONNECTED W/A BATTERY BACKUP.

SELF CLOSING 20 MINUTE FIRE RATED DR.

METAL L-CURP & BLK CORE FILL PLACEMENT PER CODE

FIRE RATED GVP BOARD SIZE AND PLACEMENT PER CODE

FIRST 2 FLR JSTTRUSSES MUST BE TIED TOGETHER @ ANCHOR BOLT W/LOCKING

FRESHTOP/LOCKING REQUIRED IN FLOORS EXCEEDING 1000 SQ FT

OPTIONAL BEAM VACUUM FL.

FOR PROPER HANDLING, INSTALLATION, & BRACING SEE 18B.01 SUMMARY

SHEET PROVIDED BY TRUSS MANUFACTURER

CALKED AT ALL SEAMS

ALL POLY TO BE TAPED OR AIR BARRIER & VAPOR REQUIRED ON ALL EXT. WALLS

EXHAUST FANS REQUIRED IN ALL BATHROOMS

ALL HEADERS & BEAMS TO BE VERIFIED & ARE SUBJECT TO CHANGE PER TRUSS MANUFACTURER SPECS

ADJUST TO BE ANDERSEN 200 SERIES CASEMENT W/A U-VALUE OF .34

W/A U-VALUE OF .34

W/A U-VALUE OF .34

W/A U-VALUE OF .34

W/A U-VALUE OF .34

W/A U-VALUE OF .34

W/A U-VALUE OF .34

W/A U-VALUE OF .34

W/A U-VALUE OF .34

W/A U-VALUE OF .34

W/A U-VALUE OF .34

W/A U-VALUE OF .34

W/A U-VALUE OF .34

W/A U-VALUE OF .34

W/A U-VALUE OF .34

W/A U-VALUE OF .34

W/A U-VALUE OF .34

W/A U-VALUE OF .34

W/A U-VALUE OF .34

W/A U-VALUE OF .34

W/A U-VALUE OF .34

W/A U-VALUE OF .34

W/A U-VALUE OF .34

W/A U-VALUE OF .34

W/A U-VALUE OF .34

W/A U-VALUE OF .34

W/A U-VALUE OF .34

W/A U-VALUE OF .34

W/A U-VALUE OF .34

W/A U-VALUE OF .34

W/A U-VALUE OF .34

W/A U-VALUE OF .34

W/A U-VALUE OF .34

W/A U-VALUE OF .34

W/A U-VALUE OF .34

W/A U-VALUE OF .34

W/A U-VALUE OF .34

W/A U-VALUE OF .34

W/A U-VALUE OF .34

W/A U-VALUE OF .34

W/A U-VALUE OF .34

W/A U-VALUE OF .34

W/A U-VALUE OF .34

W/A U-VALUE OF .34

W/A U-VALUE OF .34

W/A U-VALUE OF .34

W/A U-VALUE OF .34

W/A U-VALUE OF .34

W/A U-VALUE OF .34

W/A U-VALUE OF .34

W/A U-VALUE OF .34

W/A U-VALUE OF .34

W/A U-VALUE OF .34

W/A U-VALUE OF .34

W/A U-VALUE OF .34

W/A U-VALUE OF .34

W/A U-VALUE OF .34

W/A U-VALUE OF .34

W/A U-VALUE OF .34

W/A U-VALUE OF .34

W/A U-VALUE OF .34

W/A U-VALUE OF .34

W/A U-VALUE OF .34

W/A U-VALUE OF .34

W/A U-VALUE OF .34

W/A U-VALUE OF .34

W/A U-VALUE OF .34

W/A U-VALUE OF .34

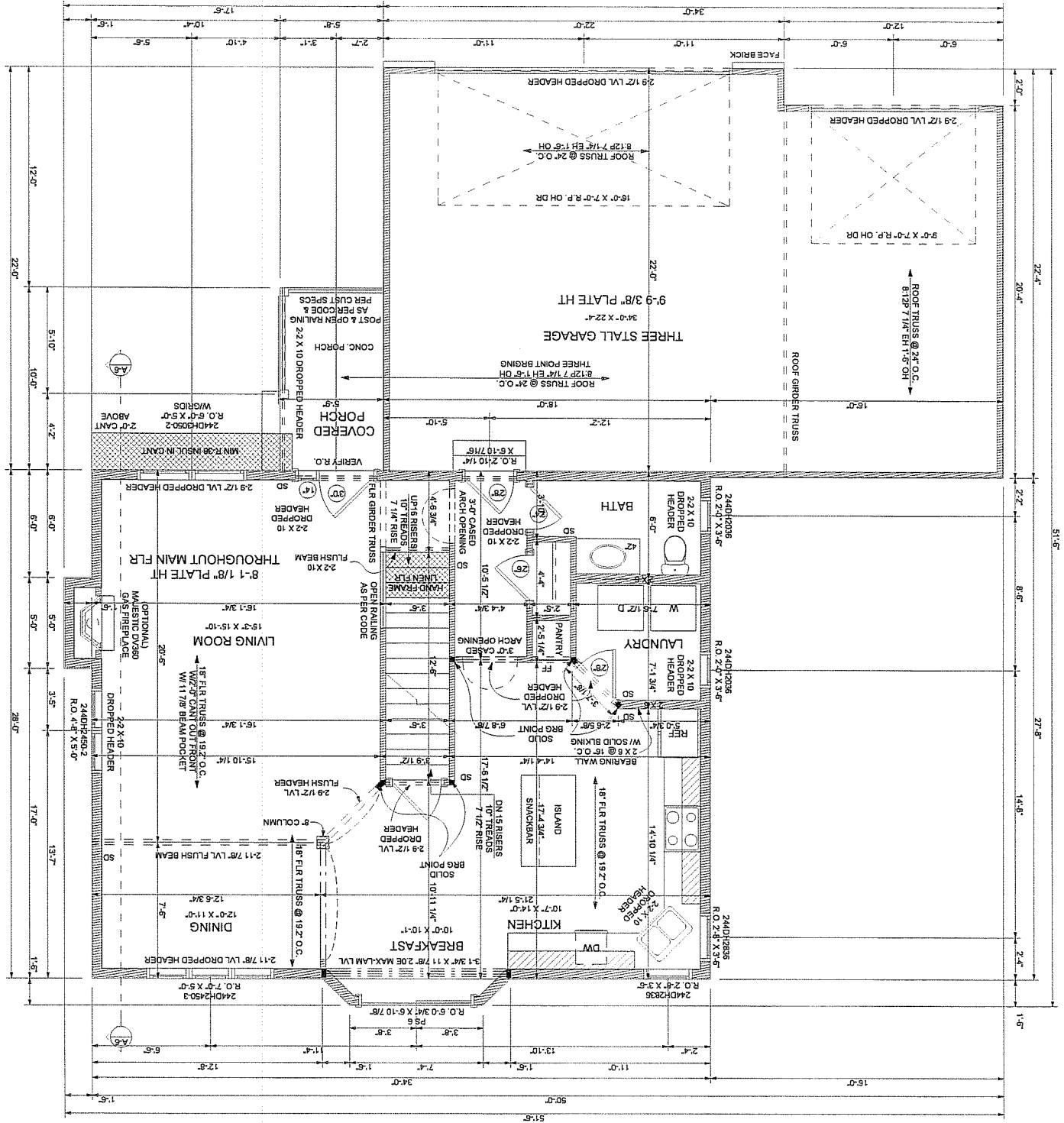
W/A U-VALUE OF .34

W/A U-VALUE OF .34

W/A U-VALUE OF .34

# MAIN FLOOR PLAN

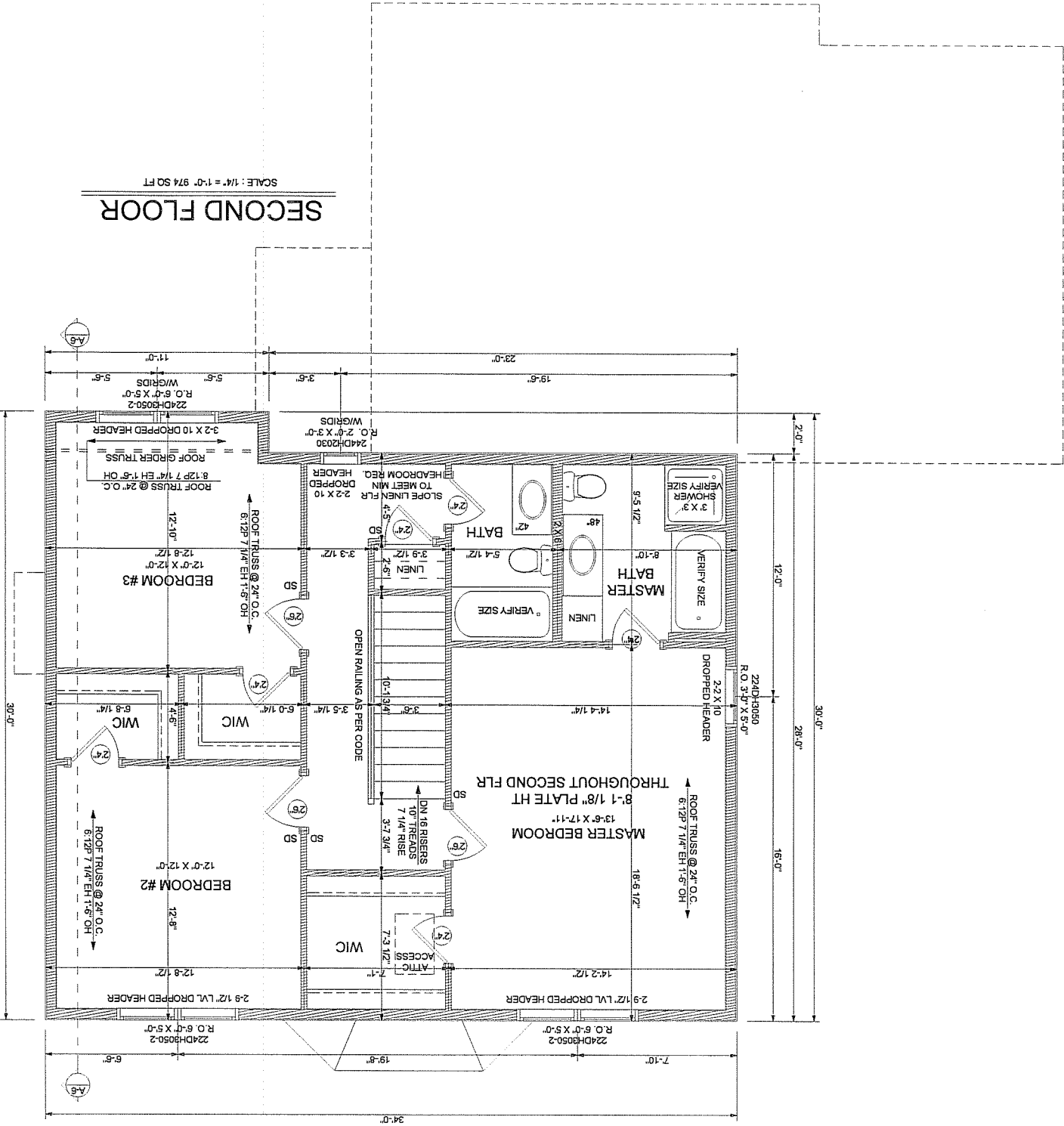
SCALE: 1/4" = 1'-0" 9/32 50 FT



- NOTE:**
- ALL SMOKE DETECTORS ARE TO BE INTERCONNECTED W/BATTERY BACKUP.
  - INTERCONNECTED W/BATTERY BACKUP.
  - PLACEMENT PER CODE
  - SELF CLOSING 20 MINUTE
  - FIRE RATED DR
  - METAL L-CIP & BLK CORE FILL
  - PLACEMENT PER CODE
  - FIRE RATED GYP BOARD SIZE
  - AND PLACEMENT PER CODE
  - FIRST 2 FLRS TRUSSES MUST BE TIED TOGETHER @ ANCHOR BOLT W/BLOCKING
  - FOR PROPER HANDLING, INSTALLATION, & BRACING SEE HB-91 SUMMARY SHEET PROVIDED BY TRUSS MANUFACTURER
  - ALL POLY TO BE TAPED OR CAULKED AT ALL SEAMS
  - AIR BARRIER & VAPOR REQUIRED ON ALL EXT. WALLS
  - EXHAUST FANS REQUIRED IN ALL BATHROOMS
  - ALL HEADERS & BEAMS TO BE VERIFIED & ARE SUBJECT TO CHANGE
  - PER TRUSS MANUFACTURER SPECS
  - W/D'S TO BE ANDERSEN 200 SERIES TILT WASH DEL HUNG W/STRIDS FRONT ONLY
  - W/A U-VALUE OF .34
  - P-TO DR TO BE ANDERSEN PERMA-SHIELD
  - W/A U-VALUE OF .34
  - ALL EXT. DR'S TO BE DURA-CORE, STYLE PER CUST. SPECS. & W/A U-VALUE OF .27

# SECOND FLOOR

SCALE: 1/4" = 1'-0" 974 SQ FT



**NOTE:**

- ALL SMOKE DETECTORS ARE TO BE INTERCONNECTED W/BATTERY BACKUP.
- SELF CLOSING 20 MINUTE FIRE RATED DR.
- METAL L-CRIP & BLK CORE FILL.
- PLACEMENT PER CODE.
- FIRE RATED GYP BOARD SIZE AND PLACEMENT PER CODE.
- FIRE STOP/BLOCKING REQUIRED IN FLOORS EXCEEDING 1000 SQ FT.
- OPTIONAL BEAM VACUUM R.I.
- PER CUSTOMER SPECS.
- FOR PROPER HANDLING, INSTALLATION, & BRACING SEE HB-91 SUMMARY SHEET PROVIDED BY TRUSS MANUFACTURER.
- ALL POLY TO BE TAPED OR CALKED AT ALL SEAMS.
- AIR BARRIER & VAPOR REQUIRED ON ALL EXT. WALLS.
- EXHAUST FANS REQUIRED IN ALL BATHROOMS.
- ALL HEADERS & BEAMS TO BE VERIFIED & ARE SUBJECT TO CHANGE PER TRUSS MANUFACTURER SPECS.
- ADWS TO BE ANDERSEN 2000 SERIES TITL-WASH DGL HUNG W/GRIDS FRONT ONLY W/A U-VALUE OF .34